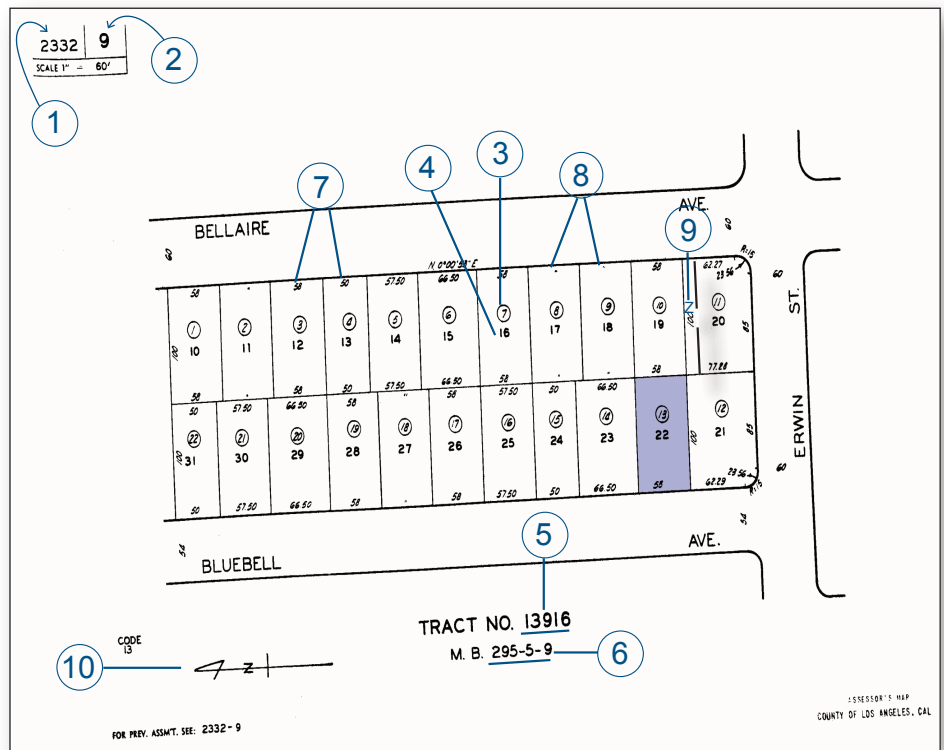


How to read a County Tax Assessor Plat Map

The Assessor's Map is not filed with the official county's records. This map is based upon tract maps that are filed with the local county records. The Assessor will include a reference to the maps that have been filed at the county.

1. Assessor's book number
2. Page number of Assessor's book
3. Assessor's parcel number assigned to the specific lot
4. Lot number
5. Tract number
6. Recording information of tract
7. Lot dimensions (in feet, per the Assessor)
8. Indicates lot dimensions equal to adjoining lots
9. Indicates two or more parcels of land are assessed as one parcel
10. North/South indicator



First American Title™

800.854.3643 | www.firstam.com