

Guide to Reading An Assessor's Plat Map

A Parcel Number

Always in a small circle (occasionally in an oval).

B Book and Page Circle

Indicates what map page (# below the line) adjoins our map and in some cases which Assessor's Book (# above the line).

C Lot Number

Never circled; shows the subdivision lot number of the property.

D "Picture Corner"

Shows the exterior corners of subdivision map boundaries as shown on the map.

E Page Number

Of the Assessor's Book, Page & Picture Corner 1#. This is the full 3-digit number (coinciding with column one in the changes box); always in an oval.

F Acreage Figures

A decimal number with AC following. Not always accurate. Use only as estimate.

G Distances and Bearings

Data on borders of the map. This data is from recorded deeds or surveys.

H Lower Right

Brief legal description of the properties included on this page.

I North Arrow

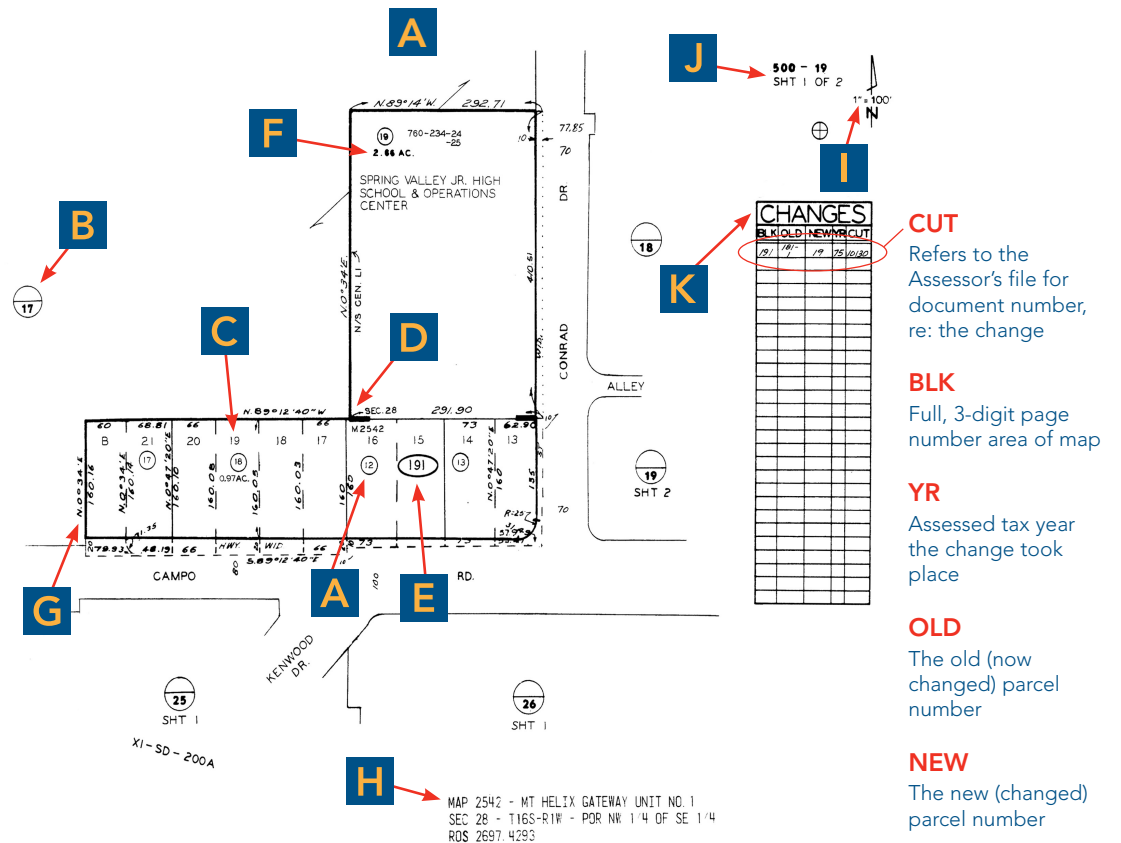
Will not always be pointing up. SCALE: Is useful if map has been printed to proper size.

J Assessor's Book Number

Followed by first two digits of the Page Number, located in the upper right corner next to arrow.

K Changes Box

Provides the history of the map page.



First American Title™

800.451.0454 | www.firstam.com